

Subject NS Product Registration Procedure

Bulletin Type ☐ Product ☐ Marketing ☒ Service

Bulletin Number REG-03-21-2017

Date 03/21/2017

Product Unified Communications

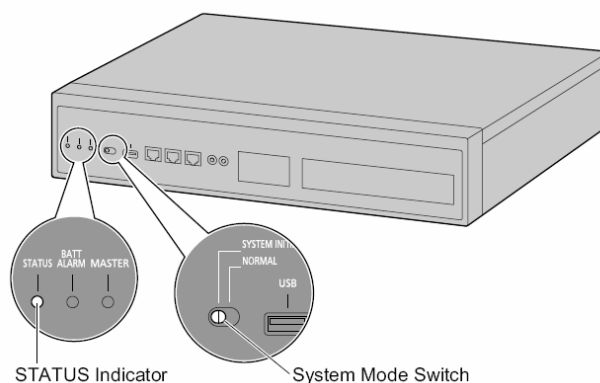
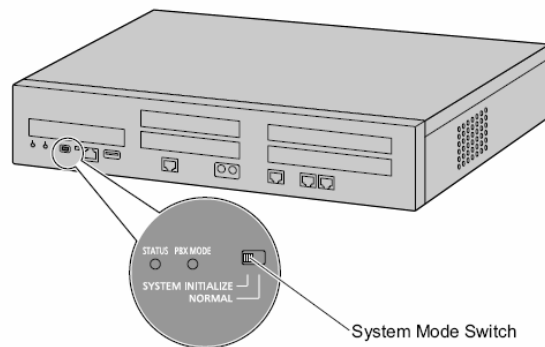
This document is a walk-through on how to register the KX-NS system.

Initialize the System

While the system is powered OFF:

1. Check the System Mode Switch is set to the "SYSTEM INITIALIZE" position.
2. Turn the POWER On.
The STATUS indicator will flash green.
3. While the STATUS indicator is flashing green, slide the System Mode Switch back to "NORMAL" position.
4. If successfully executed, the STATUS indicator will stop flashing and remain lit up.

Please refer to the NS Installation Manual for details on Starting the PBX and status indications.

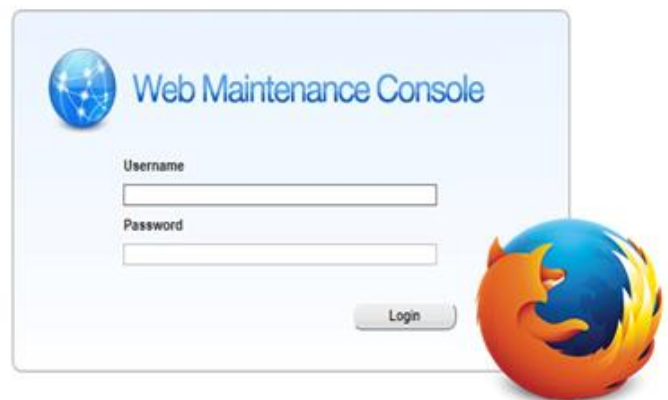


Connect to the System

These instructions assume you have read and chosen a connection type for the KX-NS cabinet you are programming. Please refer to the PC Connection section of the **Installation Manual** for information on connection options.

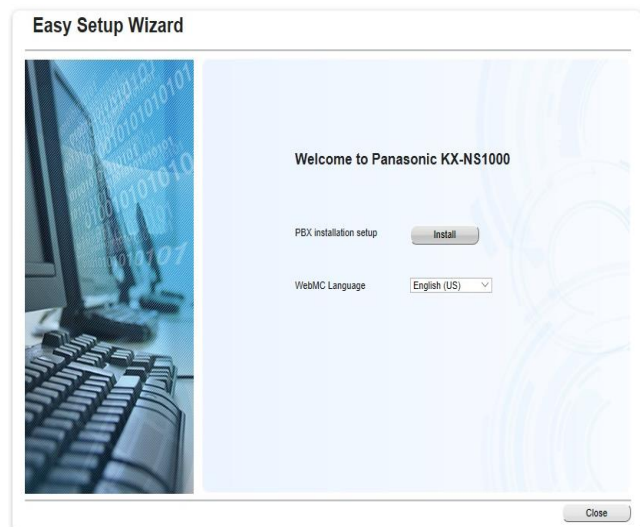
Connect to the NS Web Interface using Firefox.

Username: **INSTALLER**
Password: **1234**



Connect to the System

Complete the **Easy Setup Wizard**.



Navigate to the **Maintenance** Section



RESELLER BULLETIN

Panasonic
AUTHORIZED
RESELLER PROGRAM

On the left menu select:
Utility > Flash ROM ID Information

13. Flash ROM ID
Information

Flash ROM ID Information

The Flash ROM ID of this PBX is : XXXX-XXXX-XXXX-XXXX

Confirmation code for Flash ROM ID of this PBX is : XXXX

OK

Panasonic Partner Portal

Go to www.panasonicpartnerportal.com
Enter your login credentials.

USER LOGIN

E-mail or username *

Password *

[Request new password](#)

LOG IN

Click on **Information** at the top.

Next, select **Product Registration Instructions** from
the Service and Support list.

PRODUCT RANGE OVERVIEW	RESOURCE FINDER	INFORMATION
PROGRAMS	SERVICE AND SUPPORT	
ABOUT	FAQ'S	
PRODUCT AUTHORIZATION	WARRANTIES	
OPPORTUNITIES	WHERE TO BUY	
DEAL REGISTRATION	FINANCE SOLUTIONS	
POS UPLOAD	PRODUCT REGISTRATION	
SPIFF PROGRAMS	INSTRUCTIONS	
INVENTORY REPORT	PRODUCT TECHNICAL SUPPORT HELP	
INSTANT REBATES	FORM	

PRODUCT REGISTRATION INSTRUCTIONS

[View](#) [Edit](#) [Grant](#) [Node export](#)

[Product Registration Instructions](#)

[Hardware Registration and Software License Keys Activation](#)

In the event you have problems accessing the new site right away and need to register a system or license please visit the registration site directly below.
<https://kms.panacare.net/>

Click on <https://kms.panacare.net> to be redirected¹ to the registration portal.

¹ In the event the Panasonic Partner Portal is down, you can type in the link above to go directly to Panacare.

Panacare Portal

Select **Dealer Login** at the top right of the page.

[Dealer Login](#) | [Non-Dealer Login](#)

Enter your dealer identification information into the appropriate blank, then click **Log In**.



The form is titled "User Log In" and contains two input fields: "Dealer ID" and "Tech ID". Below these fields is a "Log in" button.



RESELLER BULLETIN

Panasonic
AUTHORIZED
RESELLER PROGRAM

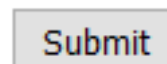
On the left, mouse over **Dealer** on the left menu.
Then select **System Registration**.



Fill out the **Mandatory Fields**
PBX Site Data is optional.

A screenshot of a form titled 'Mandatory Fields'. It contains three input fields: '* Flash ROM ID:' with a text box, '* PBX Site Name' with a text box, and '* PBX Purchased from' with a dropdown menu showing '- Select Distributor -'.

Scroll to the bottom and click **SUBMIT**.



Your new Download item will appear in **Red**.

	<u>Tech ID</u>	<u>Flash ROM ID</u>	<u>Req Date</u>
<u>Download</u>	0406	<u>123456789012</u>	3/10/2017
<u>Download</u>			1/19/2017

Download your file in a location you can find it later. You will be uploading this file into the KX-NS system.

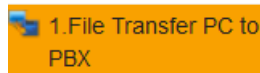


Uploading Registration File

Navigate to the **Maintenance** Section



Go to **Utility > File > File Transfer (PC to PBX)**

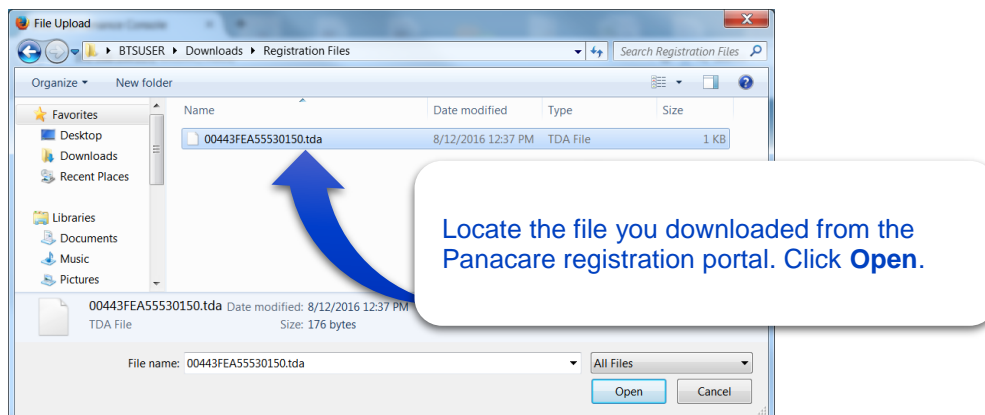


File Transfer PC to PBX

File Name :

No file selected.

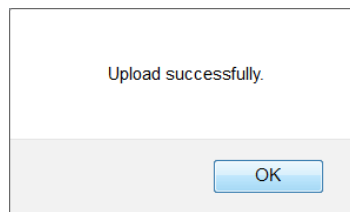
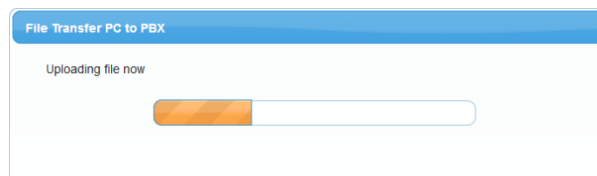
Click **Browse...**



Click **Execute**.



You will see the progress of the file load.
When it is finished, Click **OK**.



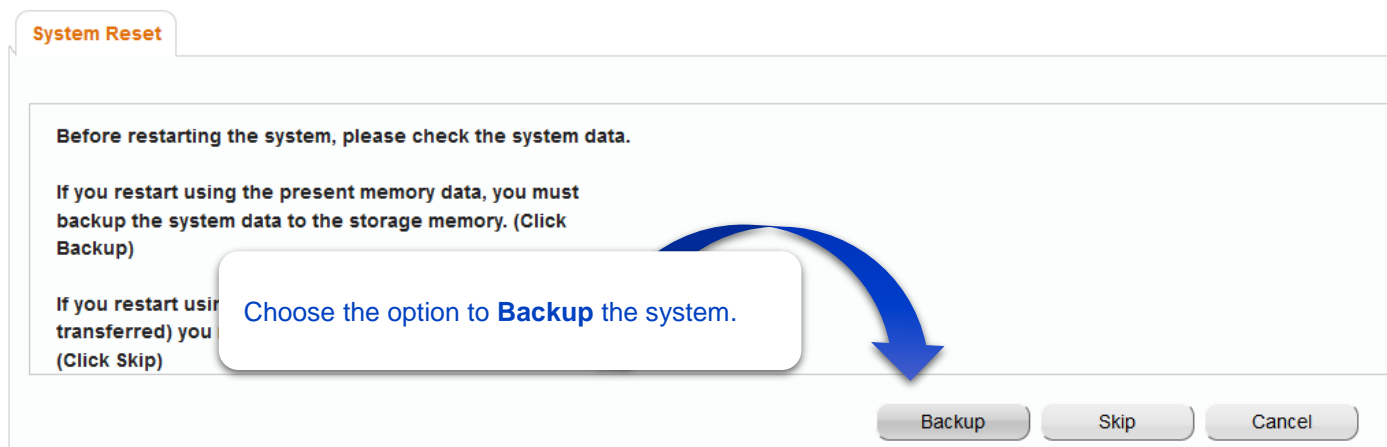
System Back-up

Once you have successfully loaded the file, the system will need to be restarted.

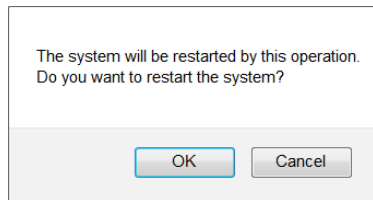
While in the **Maintenance** Section



Go to **System Control** and select **System Reset**



Select **OK** two times to restart the system.



Once the system completes the restart, the registration process is complete.

